

TRACT NO. 19890

IN THE CITY OF LOS ANGELES

BEING A SUBDIVISION OF A PORTION OF LOT C, TRACT NO. 9300, AS PER MAP RECORDED IN BOOK 125, PAGES 55 TO 78 INCLUSIVE OF MAPS, RECORDS OF LOS ANGELES COUNTY, CALIFORNIA.

RECORDED
Jan 30 1958
32 3 PM
627
46

Walters
1300

The bearing N.23°05'05"W of the center line of LAS PULGAS ROAD as shown on the map of Tract No. 17303, M.B. 427-1/4, Records of Los Angeles County, was used as the basis of bearings on this tract.

We hereby certify that we are the owners of or are interested in the land included within the subdivision shown on the annexed map and we consent to the preparation and recording of said map and subdivision as shown within the colored border lines, and we hereby dedicate to the public use the streets, highways and other public ways shown on said map within said subdivision and we hereby grant and dedicate to the City of Los Angeles the easements for drainage purposes over the strips of land so designated on said map. And we hereby dedicate for public use for street purposes those certain strips of land designated as future street, on said map within said subdivision, reserving to ourselves and successive owners of said strips of land, any and all ordinary uses of said land except for the erection or construction of buildings thereon and except for access purposes, including the laying of pipes, conduits and other underground structures therein until such time as the legislative body shall accept the same for street purposes.

I, James J. Trindle, hereby certify that I am a Registered Civil Engineer of the State of California, and that this map consisting of 5 sheets correctly represents a survey made under my supervision AUGUST, 1956, that the survey is true and complete as shown, that the monuments shown herein actually exist and will be in place not later than OCT. 1, 1958, that their position and character are correctly shown, and that said monuments are sufficient to enable the survey to be retraced.

James J. Trindle
R.E. 7711

State of California } ss.
County of Los Angeles }

On this 10th day of July, 1957, before me, Esther N. Peterson, a Notary Public in and for said County and State, personally appeared Harry M. Eichelberger, Jr., known to me to be the President and George B. Harwood, known to me to be the Secretary of PALISAIR, INC., the corporation that executed the within instrument and known to me to be the persons who executed the within instrument on behalf of the corporation therein named and acknowledged to me that such corporation executed the same.

Esther N. Peterson
NOTARY PUBLIC
My Commission Expires September 16, 1958

State of California } ss.
County of Los Angeles }

On this 10th day of July, 1957, before me, Esther N. Peterson, a Notary Public in and for said County and State, personally appeared Harry M. Eichelberger, Jr., known to me to be the President and Alberto Nolan, known to me to be the Secretary of EICHELBERGER & HARWOOD, INC., the corporation that executed the within instrument and known to me to be the persons who executed the within instrument on behalf of the corporation therein named and acknowledged to me that such corporation executed the same.

Esther N. Peterson
NOTARY PUBLIC
My Commission Expires September 16, 1958

State of California } ss.
County of Los Angeles }

On this 10th day of July, 1957, before me, Esther N. Peterson, a Notary Public in and for said County and State, personally appeared HARRY M. EICHELBERGER, Jr., known to me to be the person whose name is subscribed to the within instrument and acknowledged to me that he executed the same.

Esther N. Peterson
NOTARY PUBLIC
My Commission Expires September 16, 1958

State of California } ss.
County of Los Angeles }

On this day of July, 1957, before me, Esther N. Peterson, a Notary Public in and for said County and State, personally appeared EARL LACHMAN and his wife, known to me to be the persons whose names are subscribed to the within instrument and acknowledged to me that they executed the same.

Esther N. Peterson
NOTARY PUBLIC
My Commission Expires September 16, 1958

State of California } ss.
County of Los Angeles }

On this day of July, 1957, before me, Esther N. Peterson, a Notary Public in and for said County and State, personally appeared known to me to be the Vice President and known to me to be the Asst. Secretary of the SECURITY FIRST NATIONAL BANK OF LOS ANGELES, a national banking association, the corporation that executed the within instrument and known to me to be the persons who executed the within instrument on behalf of the corporation herein named and acknowledged to me that such corporation executed the same as trustee.

Esther N. Peterson
NOTARY PUBLIC
My Commission Expires September 16, 1958

State of California } ss.
County of Los Angeles }

On this day of July, 1957, before me, Esther N. Peterson, a Notary Public in and for said County and State, personally appeared known to me to be the Vice President and known to me to be the Asst. Secretary of THE COLWELL COMPANY, the corporation that executed the within instrument and known to me to be the persons who executed the within instrument on behalf of the corporation herein named and acknowledged to me that such corporation executed the same as trustee.

Esther N. Peterson
NOTARY PUBLIC
My Commission Expires September 16, 1958

State of California } ss.
County of Los Angeles }

On this day of July, 1957, before me, Esther N. Peterson, a Notary Public in and for said County and State, personally appeared known to me to be the Rector of THE RECTOR, WARDENS AND VESTRYMEN OF ST. MATTHEW'S PARISH IN PACIFIC PALISADES, the religious corporation that executed the within instrument and known to me to be the person who executed the within instrument on behalf of the religious corporation herein named and acknowledged to me that such religious corporation executed the same.

Esther N. Peterson
NOTARY PUBLIC
My Commission Expires September 16, 1958

PALISAIR, INC., a corporation, as owner and as owners of an appurtenant easement for road purposes over a portion of said land, as granted to Hamilton Garland and Jean B. Garland, his wife, as joint tenants, by deed recorded in Book 21809, Page 395, of Official Records.

By Harry M. Eichelberger Jr. President
By George B. Harwood Secretary

EICHELBERGER & HARWOOD, INC., a corporation.

By Harry M. Eichelberger Jr. President
By Alberta Nolan Secretary

Harry M. Eichelberger, Jr.
HARRY M. EICHELBERGER, JR.

Approved January 30, 1958
JOHN A. LAMBIE, County Engineer
By Ralph J. Kennedy Deputy

I HEREBY CERTIFY THAT ALL SPECIAL ASSESSMENTS OF WHICH I AM IN CHARGE, TO WHICH THE LAND INCLUDED IN THE WITHIN SUBDIVISION OR ANY PART THEREOF IS SUBJECT AND WHICH MAY BE PAID IN FULL, HAVE BEEN PAID IN FULL.
DIRECTOR, BUREAU OF ASSESSMENTS, ROBERT G. MAST
Date DEC 5, 1957 Deputy

I HEREBY CERTIFY THAT I HAVE EXAMINED THIS MAP AND THAT THE SUBDIVISION AS SHOWN HEREON IS SUBSTANTIALLY THE SAME AS IT APPEARED ON THE TENTATIVE MAP AND ANY APPROVED ALTERATIONS THEREOF; THAT ALL PROVISIONS OF CHAPTER 128 STATUTES OF 1943 AS AMENDED STATE OF CALIFORNIA AND OF ALL LOCAL ORDINANCES APPLICABLE AND IN EFFECT AT THE TIME OF THE APPROVAL OF THE TENTATIVE MAP HAVE BEEN COMPLIED WITH AND I AM SATISFIED THAT THIS MAP IS TECHNICALLY CORRECT.

CITY ENGINEER Lyall A. Pardee
DATE Jan 24, 1958

I HEREBY CERTIFY THAT THERE IS ON FILE IN THE OFFICE OF THE CITY ENGINEER OF THE CITY OF LOS ANGELES COUNTY OF LOS ANGELES, STATE OF CALIFORNIA, A CERTIFICATE MADE BY THE Title Insurance and Trust Company OF SAID CITY, ORDER NO. 4631450 DATED Dec 9, 1957 CERTIFYING THAT IT APPEARS FROM THE RECORDS OF SAID CITY AND COUNTY THAT Palisair, Inc., Eichelberger & Harwood, Inc., Harry M. Eichelberger, Jr.

(ARE) THE ONLY PERSONS WHOSE CONSENT IS REQUIRED FOR THE RECORDING OF THIS MAP BY LAW.
CITY ENGINEER Lyall A. Pardee
DATE Jan 24, 1958

I HEREBY CERTIFY THAT THE CITY COUNCIL OF THE CITY OF LOS ANGELES APPROVED THE ATTACHED MAP AND ACCEPTED ON BEHALF OF THE PUBLIC ALL THE STREETS, ROADS, ALLEYS, HIGHWAYS AND EASEMENTS SHOWN ON SAID MAP AND THEREIN OFFERED FOR DEDICATION EXCEPT THOSE STIMPS MARKED "FUTURE STREET" AND "FUTURE ALLEY" PROVIDED THAT NOTHING HEREIN CONTAINED SHALL BE CONSTRUED AS AN ACCEPTANCE OF ANY IMPROVEMENTS MADE IN OR UPON ANY STREET, ROAD, ALLEY, HIGHWAY OR EASEMENT SHOWN ON THIS MAP.

Jan 29, 1958 CITY CLERK Walter C. Peterson
Albert R. Smith Deputy

SCALE 1" = 40'

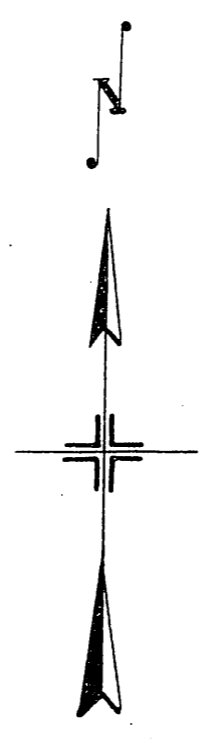
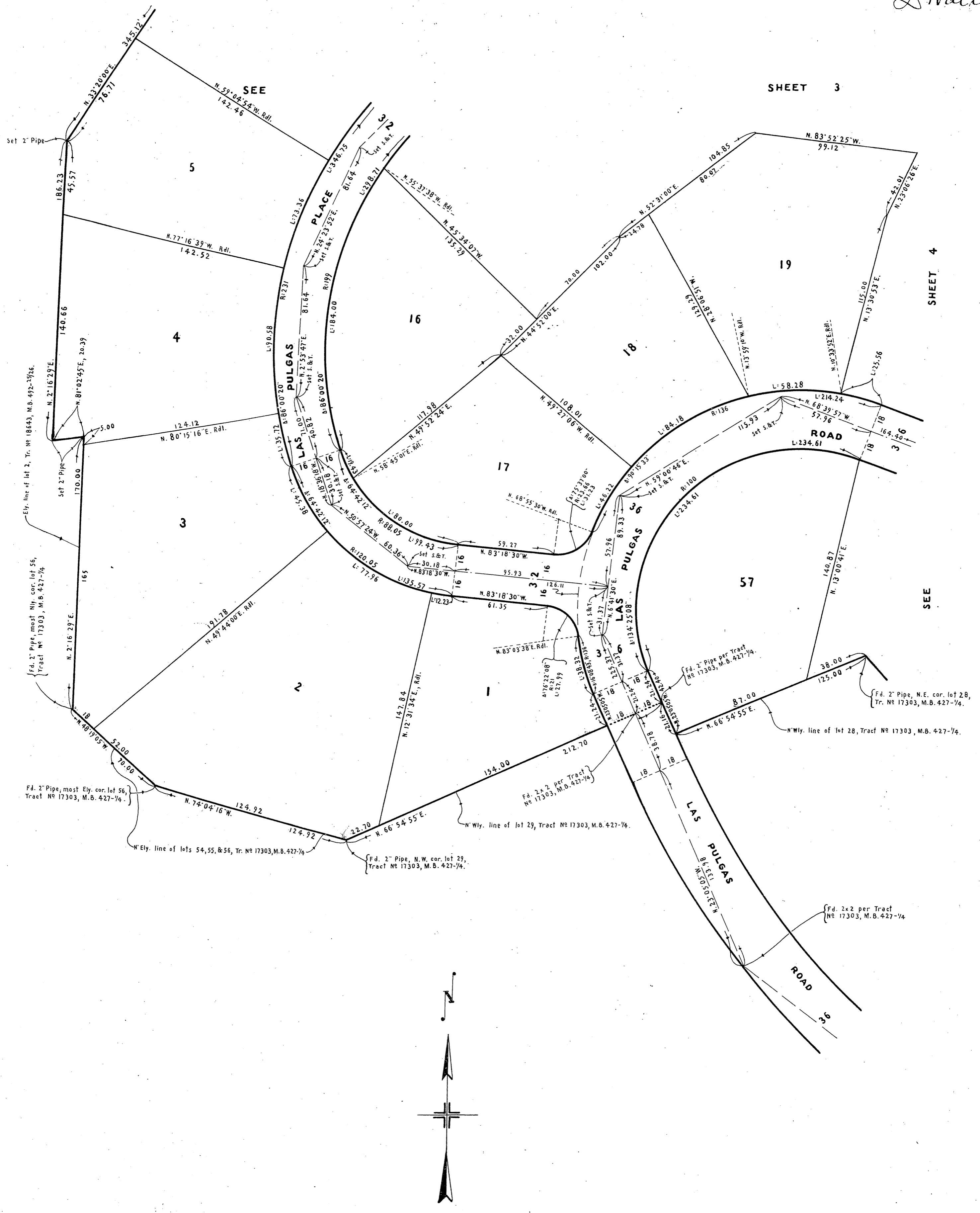
TRACT NO. 19890

IN THE CITY OF LOS ANGELES

SHEET 2 OF 5 SHEETS

RECORDED
BY REQUEST OF OWNER
Jan. 30 1958
3:32 PM
BOOK 627
PAGE 47

S. Walters

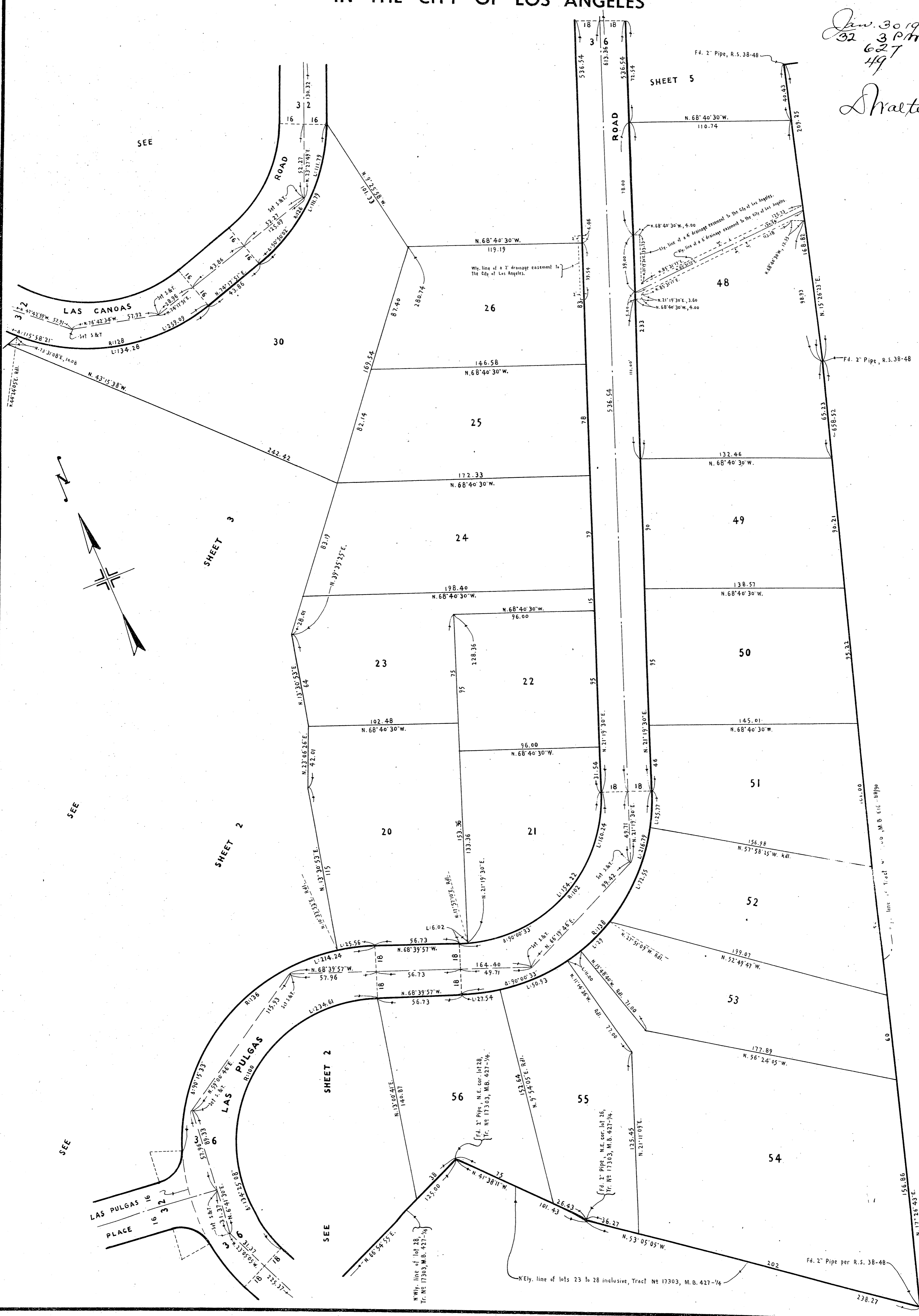


TRACT NO. 19890

IN THE CITY OF LOS ANGELES

627 49

Jan. 30 1958
32 3 PM
627
49
Shalters



SEE

SHEET 3

SHEET 2

SHEET 5

SEE

SEE

SHEET 2

SEE

LAS PULGAS PLACE

LAS CANOAS ROAD

ROAD

SEE

SEE

SEE

SEE

SEE

SEE

SEE

SEE

SEE

SEE

SEE

SEE

SEE

SEE

SEE

SEE

SEE

SEE

SEE

SEE

SEE

SEE

SEE

SEE

SEE

SEE

SEE

SEE

SEE

SEE

SEE

SEE

SEE

SEE

SEE

SEE

SEE

SEE

SEE

SEE

SEE

SEE

SEE

SEE

SEE

SEE

SEE

SEE

SEE

SEE

SEE

SEE

SEE

SEE

SEE

SEE

SEE

SEE

SEE

SEE

SEE

SEE

SEE

SEE

SEE

SEE

SEE

SEE

SEE

SEE

SEE

SEE

SEE

SEE

SEE

SEE

SEE

SEE

SEE

SEE

SEE

SEE

SEE

SEE

SEE

SEE

SEE

SEE

SEE

SEE

SEE

SEE

SEE

SEE

SEE

SEE

SEE

SEE

SEE

SEE

SEE

SEE

SEE

SEE

SEE

SEE

SEE

SEE

SEE

SEE

SEE

SEE

SEE

SEE

SEE

SEE

SEE

SEE

SEE

SEE

SEE

SEE

SEE

SEE

SEE

SEE

SEE

SEE

SEE

SEE

SEE

SEE

SEE

SEE

SEE

SEE

SEE

SEE

SEE

SEE

SEE

SEE

SEE

SEE

SEE

SEE

SEE

SEE

SEE

SEE

SEE

SEE

SEE

SEE

SEE

SEE

SEE

SEE

SEE

SEE

SEE

SEE

SEE

SEE

SEE

SEE

SEE

SEE

SEE

SEE

SEE

SEE

SEE

SEE

SEE

SEE

SEE

SEE

SEE

SEE

SEE

SEE

SEE

SEE

SEE

SEE

SEE

SEE

SEE

SEE

SEE

SEE

SEE

SEE

SEE

SEE

SEE

SEE

SEE

SEE

SEE

SEE

SEE

SEE

SEE

SEE

SEE

SEE

SEE

SEE

SEE

SEE

SEE

SEE

SEE

SEE

SEE

SEE

SEE

SEE

SEE

SEE

SEE

SEE

SEE

SEE

SEE

SEE

SEE

SEE

SEE

SEE

SEE

SEE

SEE

SEE

SEE

SEE

SEE

SEE

SEE

SEE

SEE

SEE

SEE

SEE

SEE

SEE

SEE

SEE

SEE

SEE

SEE

SEE

SEE

SEE

SEE

SEE

SEE

SEE

SEE

SEE

SEE

SEE

SEE

SEE

SEE

SEE

SEE

SEE

SEE

SEE

SEE

SEE

SEE

SEE

SEE

SEE

SEE

SEE

SEE

SEE

SEE

SEE

SEE

SEE

SEE

SEE

SEE

SEE

SEE

SEE

SEE

SEE

SEE

SEE

SEE

SEE

SEE

SEE

SEE

SEE

SEE

SEE

SEE

SEE

SEE

SEE

SEE

SEE

SEE

SEE

SEE

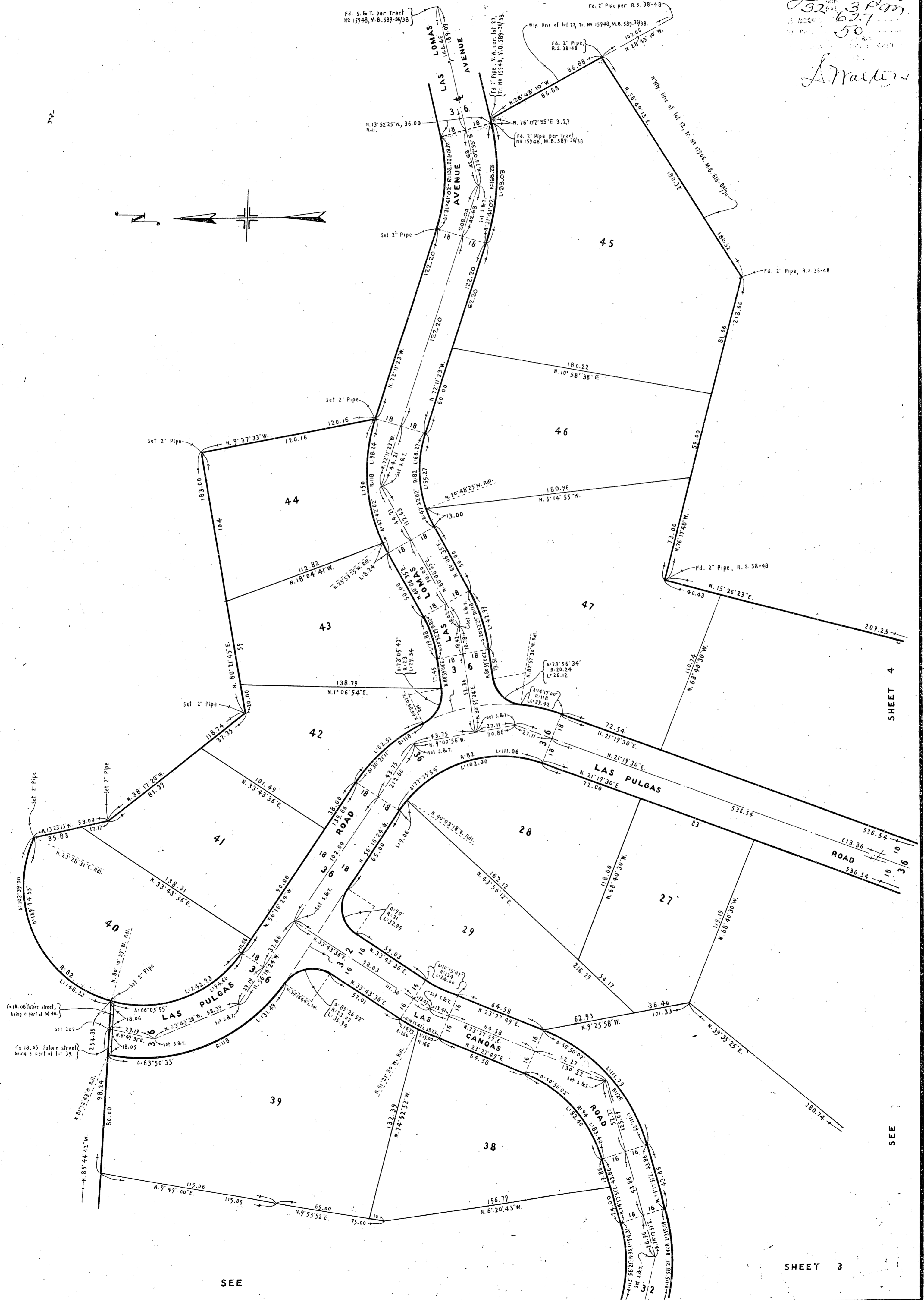
SCALE 1" = 40'

TRACT NO. 19890

SHEET 5 OF 5 SHEETS

IN THE CITY OF LOS ANGELES

RECORDED
 Jan 30 1958
 32 3 PM
 627
 50
L. Martin



SHEET 4

SEE

SHEET 3

SEE